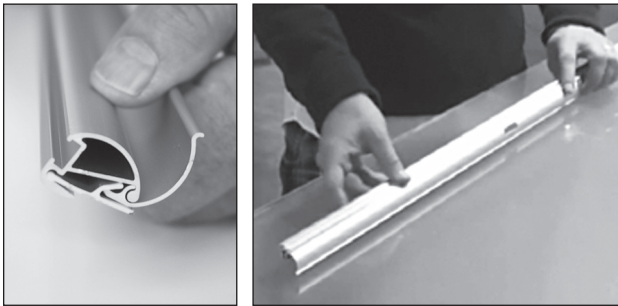


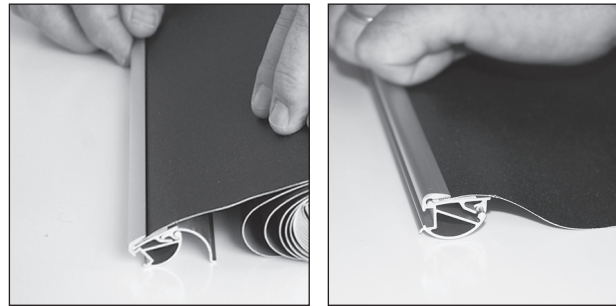
# instructions

## A simple graphic mounting guide for Maxibit Zap with Gripper profile

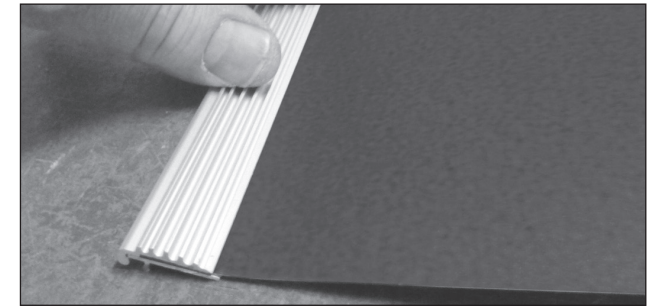
**Graphic dimensions**  
(of which 190 mm in the cassette)  
**850x2400 and 1185x2400 mm**



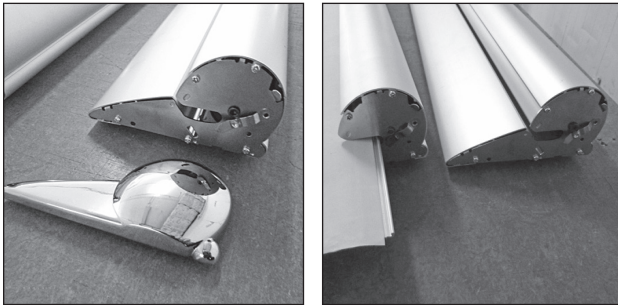
**Step 1**  
Open the Gripper profile. Place it on the table like this.



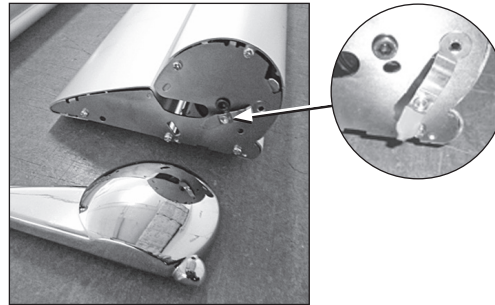
**Step 2**  
Insert the top of the graphic into the profile. Make sure the graphic is pushed in as far as it can go (\*). Snap the profile shut.



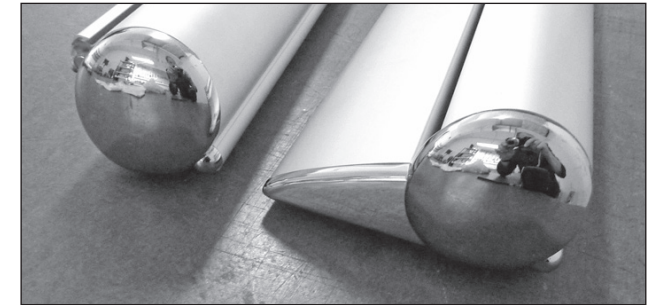
**Step 3**  
Mount the D-profile to the bottom of the graphic. The profile should be applied to the front of the graphic.



**Step 4**  
Open the end cap to the right side of the Zap when viewed from the front. The end cap is held by a hook at the rear upper corner and a spring clip in front. Zap D3 is also fixed with a screw.



**Step 5**  
Hold the graphic firmly and release the locking pin on roll mechanism. Allow the graphic to roll all the way in, in one controlled and steady motion.



**Step 6**  
Re-attach the end cap by locating and aligning the rear hook. Aim the spring clip into the slot and press to snap in. Ready!

(\* ) If your graphic panel is thin or printed on fabric, apply a strip of masking tape along the top of the graphic on the backside. The masking tape will help controlling the inserting of the graphic and keeping it steady and aligned.

Note: If you wish to exchange graphic, start by: 1. Stretching the graphic all the way out (easiest with help) and 2. Lock the roller with the locking pin 3. Slide out the graphic sideways 4. Insert the new graphic.

Revised 20 June 2011

**Maxibit**<sup>®</sup>  
www.maxibit.com