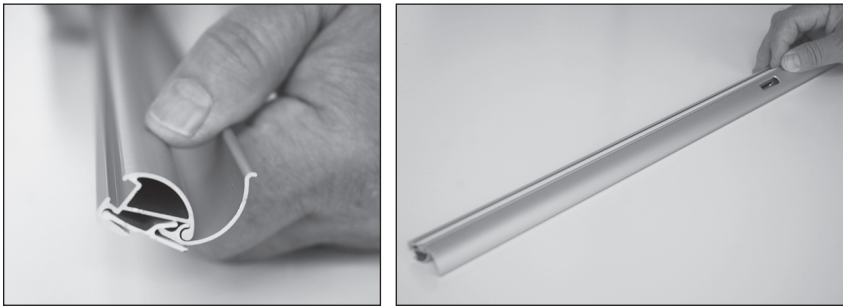


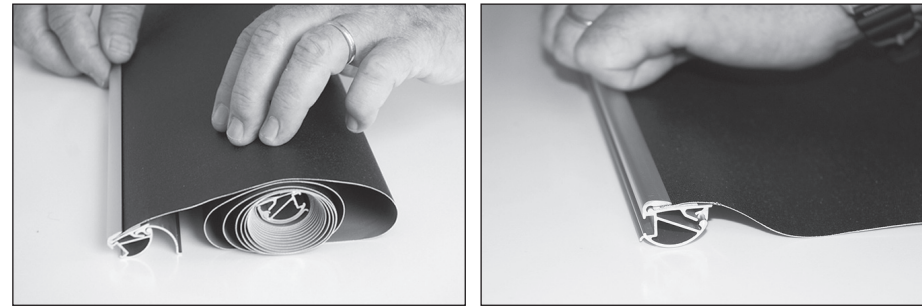
# instructions

## A simple graphic mounting guide for Maxibit Solo with Gripper profile

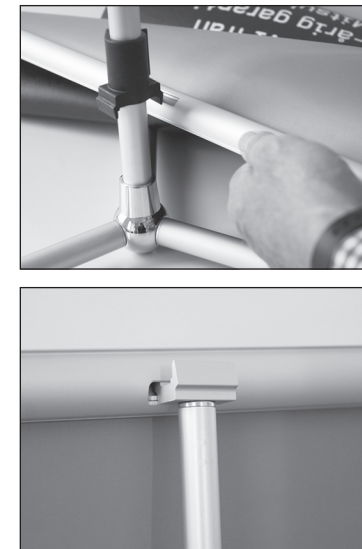
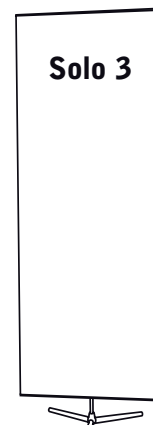
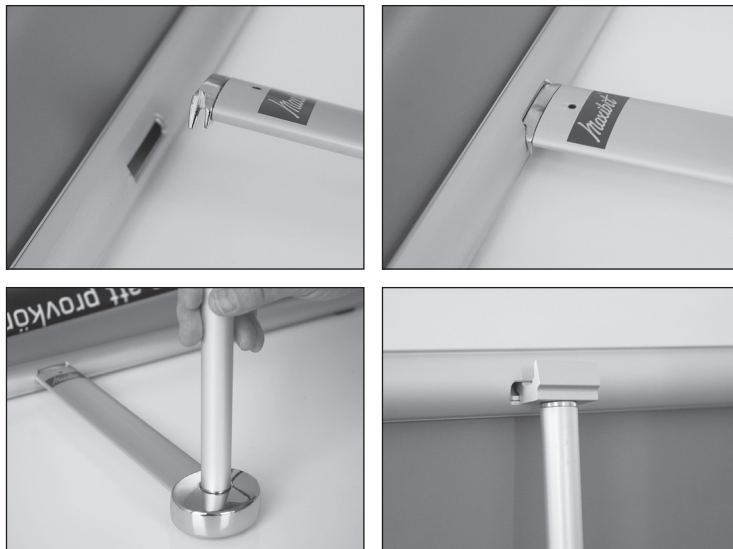
Graphic dimensions  
850x2190 and 610x2190 mm



**Step 1**  
Open the Gripper profile. Place it on the table like this.



**Step 2**  
Insert the end of the graphic into the profile. Make sure the graphic is pushed in as far as it can go (\*). Snap the profile shut.



(\*). If your graphic panel is thin or printed on fabric, apply a strip of masking tape along the top of the graphic on the backside. The masking tape will help controlling the inserting of the graphic and keeping it steady and aligned.