



## Graphic Measures Guide

- Zap page 3
- Solo page 3
- Scene page 3
- Gallery page 3
- Stage page 4
- Network page 5-7

- NW Frost page 8
- Satellite page 9-10
- Original 8 & Demo page 10
- Icon page 10
- LaunchPack page 10

Product	Description	Size, width x height (mm)	Comment
<b>Zap</b>			
Zap D2, 850	With Gripper profile	850x2400	Of which 190 mm in cassette
Zap D2, 1185	With Gripper profile	1185x2400	Of which 190 mm in cassette
Zap D3, 850	With Gripper profile	850x2400	Of which 190 mm in cassette
Zap D3, 1185	With Gripper profile	1185x2400	Of which 190 mm in cassette

<b>Solo</b>			
Solo 1	With Gripper profile and magnets	850/610/1185x2235	
Solo 3	With Gripper profile and magnets	850/610/1185x1000–2190	

<b>Scene</b>			
Scene	1000, 2000, 3000	1000/2000/3000x2190	Allow extra 50+50 mm for top and bottom seam
	750, 1500, 2250, 2500	750/1500/2250/2500x2190	
	+ any customized width*	Free x 2190	
Scene hanging	1000, 2000, 3000	1000/2000/3000 x Free	
	750, 1500, 2250, 2500	750/1500/2250/2500 x Free	
	+ any customized width*	Free x Free	

<b>Gallery</b>			
Hanging and wall mounted	2000*	2000 x Free	

Zap and Solo come with telescopic poles, allowing for adjustable heights. Solo 3 also has adjustable distance to floor, using pole slider.

\*Both Scene and Gallery can be cut to any length, either by yourself or by Maxibit for a small extra cost.

## Product

### Stage

Each horizontal Stage pole is 110 cm long. If you make a 4 section Stage you make it 440 cm wide. The vertical poles are also 110 cm. There are two feet: the Oval foot and the Tripod foot. The Tripod foot adds an extra 7 cm to the final height.

The height of the stage graphic should be 1 cm shorter than the length of the vertical poles that holds the graphic up. Therefore, a Stage that is two poles high (220 cm) should have a graphic that is 219 cm in height. 16 cm should then be added to the overall height of the graphic, 8 cm at the top and 8 cm at the bottom, such that a tubular seam can be sewn into which the horizontal poles will then be inserted. A table has been provided below:

A Stage 2 poles high should be  $219 \text{ cm} + 16 \text{ cm for the hem} = 235 \text{ cm}$ .

A Stage 3 poles high should be  $329 \text{ cm} + 16 \text{ cm for the hem} = 345 \text{ cm}$ .

A Stage 4 poles high should be  $439 \text{ cm} + 16 \text{ cm for the hem} = 455 \text{ cm}$ .

A Stage 5 poles high should be  $549 \text{ cm} + 16 \text{ cm for the hem} = 565 \text{ cm}$ .

And so on...

When hung from the ceiling, the stage fabric can be any length so long as you have the room to hang it! The fabric will still require an extra 8 cm on the top and 8 cm on the bottom (16 cm in total) for the hem.

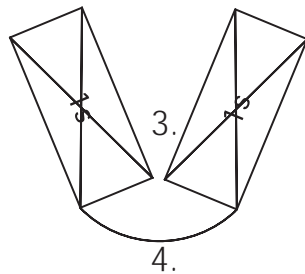
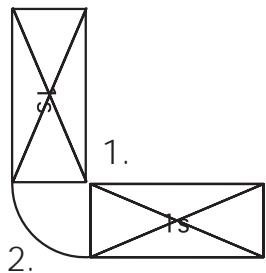
Product	Description	Size, width x height (mm)	Comment
<b>Network</b>		<b>Width</b>	
Panel, straight		733	
Panel, concave		680	
Panel, convex		800	
Panel, end	180 degrees	660	
Panel, NW Sq. Edge, End	Flat	303	
Panel, aio podium old		1630x820	
Panel, aio podium new		1630x850	
Panel, double aio podium old	Covering two all-in-one-boxes	2900x820	
Panel, double aio podium new	Covering two all-in-one-boxes	2900x850	

		Height	
1 section	x1	770	
2 sections	x2	1502	
3 sections	x3	2235	
4 sections	x4	2968	
5 sections	x5	3700	

Variations	Panel Width	Image Area	
Straight 1x3, single sided	660/733/660	2053x2235	Incl. end panels
Straight 2x3, single sided	660/733/733/660	2786x2235	Incl. end panels
Straight 3x3, single sided	660/733/733/733/660	3519x2235	Incl. end panels
Straight 4x3, single sided	660/733/733/733/733/660	4252x2235	Incl. end panels

Product	Description	Size, width x height (mm)	Comment
<b>Variations</b>	<b>Panel Width</b>	<b>Image Area</b>	
Straight 1x3, double sided	660/733/660/733	2786x2235	All around
Straight 2x3, double sided	660/733/733/660/733/733	4252x2235	All around
Straight 3x3, double sided	660/733/733/733/660/733/733/733	5718x2235	All around
Straight 4x3, double sided	660/733/733/733/733/660/733/733/733/733	7184x2235	All around
Straight 1x4, single sided	660/733/660	2053x2968	Incl. end panels
Straight 2x4, single sided	660/733/733/660	2786x2968	Incl. end panels
Straight 3x4, single sided	660/733/733/733/660	3519x2968	Incl. end panels
Straight 4x4, single sided	660/733/733/733/733/660	4252x2968	Incl. end panels
Concave 1x3, single sided	660/680/660	2000x2235	Incl. end panels
Concave 1x3, double sided	660/680/660/800	2800x2235	All around
Concave 2x3, single sided	660/680/680/660	2680x2235	Incl. end panels
Concave 3x3, single sided	660/680/680/680/660	3360x2235	Incl. end panels
Concave 4x3, single sided	660/680/680/680/680/660	4040x2235	Incl. end panels
Concave 1x4, single sided	660/680/660	2000x2968	Incl. end panels
Concave 1x4, double sided	660/680/660/800	2800x2968	All around
Concave 2x4, single sided	660/680/680/660	2680x2968	Incl. end panels
Concave 3x4, single sided	660/680/680/680/660	3360x2968	Incl. end panels
Concave 4x4, single sided	660/680/680/680/680/660	4040x2968	Incl. end panels

Product	Description	Size, width x height (mm)	Comment
<b>Variations</b>	<b>Panel Width</b>	<b>Image Area</b>	
Convex 1x3, single sided	660/800/660	2120x2235	Incl. end panels
Convex 1x3, double sided	660/800/660/680	2800x2235	Incl. end panels
Convex 2x3, single sided	660/800/800/660	2920x2235	Incl. end panels
Convex 3x3, single sided	660/800/800/800/660	3720x2235	Incl. end panels
Convex 4x3, single sided	660/800/800/800/800/660	4520x2235	Incl. end panels
Convex 1x4, single sided	660/800/660	2120x2968	Incl. end panels
Convex 1x4, double sided	660/800/660/680	2800x2968	Incl. end panels
Convex 2x4, single sided	660/800/800/660	2920x2968	Incl. end panels
Convex 3x4, single sided	660/800/800/800/660	3720x2968	Incl. end panels
Convex 4x4, single sided	660/800/800/800/800/660	4520x2968	Incl. end panels
<b>Special measures</b>		<b>Width</b>	
1.Connecting panel, 90 degrees	With hinged magnetic rail (6204)	Add 7 mm to adjacent panel	Inner corner
2.Connecting panel, 90 degrees		550	Outer corner
3.Connecting panel, 45 degrees	With hinged magnetic rail (6204)	Add 7 mm to adjacent panel	Inner corner
4.Connecting panel, 45 degrees		680	Outer corner
Connecting panel	2 concave Network facing each other	900	



# Product

## Various graphic measures for Network Frost (Showcase)

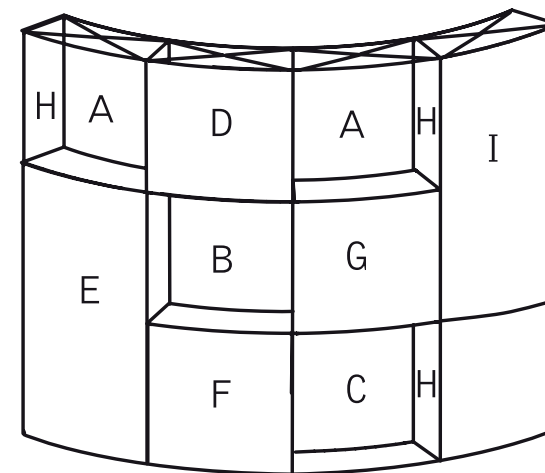
All measures in millimetre.

Panel	Convex	Concave	Straight*	Manufacturing instructions
A	680x754	800x754	733x754	Mounting kits at top and bottom (holes for panel clips at top) mounted at the back side. Magnetic tape (6240) on the image side, 754 mm.
B	680x754	800x754	733x754	Mounting kits at top and bottom (NO holes for panel clips) mounted at the back side. Magnetic tape (6240) on the image side, 754 mm.
C	680x754	800x754	733x754	Like B. Mounting kits at top and bottom, no holes, mounted at the back side. Magnetic tape (6240) on the image side, 754 mm.
D	800x754	680x754	733x754	Mounting kits at top and bottom (as usual)
E	800x1502	680x1502	733x1502	Mounting kits at top and bottom, no holes for panel clips
F	800x769	680x769	733x769	Mounting kits at top and bottom, no holes for panel clips
G	800x754	680x754	733x754	Mounting kits at top and bottom, no holes for panel clips
H	303x733	303x733	303x733	Cut out for Network pipe: at top=to the left, at bottom=to the right
I	800x1487	680x1487	733x1487	Mounting kits at top and bottom (as usual)

\*Mounting kit for straight panels (6284) mounted at the top onto graphics with panel clips, at the bottom onto graphics that are adjacent to the floor.

### Necessary magnetic rails:

- 6256 Magnetic rail 2-way (used at the sides and by the openings in the structure)
- 6257 Magnetic rail 3-way (may be used everywhere at the back side of the structure)
- 6257-00 Magnetic rail 3-way without centre magnetic tape (used at one of the sides of an opening that is adjacent to the end of the structure).
- 6251 May be replaced by 6257. Otherwise used, for instance, between panel E and F, the bottom scissor at drawing below.



Product	Description	Size, width x height (mm)	Comment
<b>Satellite Round Small</b>			
Satellite 1x1	1 section high	880/880x770	Two panels
Satellite 1x2	2 sections high	880/880x1502	Two panels
Satellite 1x3	3 sections high	880/880x2235	Two panels Standard size
Satellite 1x4	4 sections high	880/880x2968	Two panels
Satellite 1x5	5 sections high	880/880x3700	Two panels
<b>Satellite Round Large</b>			
Satellite 1x1	1 section high	637/637/637/637x770	Four panels
Satellite 1x2	2 sections high	637/637/637/637x1502	Four panels
Satellite 1x3	3 sections high	637/637/637/637x2235	Four panels Standard size
Satellite 1x4	4 sections high	637/637/637/637x2968	Four panels
Satellite 1x5	5 sections high	637/637/637/637x3700	Four panels
<b>Satellite Triangle</b>			
Satellite 1x1	1 section high	580/580/580x770	Three panels
Satellite 1x2	2 sections high	580/580/580x1502	Three panels
Satellite 1x3	3 sections high	580/580/580x2235	Three panels Standard size
Satellite 1x4	4 sections high	580/580/580x2968	Three panels
Satellite 1x5	5 sections high	580/580/580x3700	Three panels
<b>Satellite Square Small</b>			
Satellite 1x1	1 section high	405/405/405/405x770	Four panels
Satellite 1x2	2 sections high	405/405/405/405x1502	Four panels
Satellite 1x3	3 sections high	405/405/405/405x2235	Four panels Standard size
Satellite 1x4	4 sections high	405/405/405/405x2968	Four panels

Product	Description	Size, width x height (mm)	Comment
<b>Satellite Square Large</b>			
Satellite 1x1	1 section high	587/587/587/587x770	Four panels
Satellite 1x2	2 sections high	587/587/587/587x1502	Four panels
Satellite 1x3	3 sections high	587/587/587/587x2235	Four panels Standard size
Satellite 1x4	4 sections high	587/587/587/587x2968	Four panels
Satellite 1x5	5 sections high	587/587/587/587x3700	Four panels

<b>Satellite desk</b>			
Triangle/Triangle top	900 mm	580x955	Two panels

<b>Original 8 / Demo 8</b>			
Per piece		700x1000	
Per piece, top sign		700x300	
Complete	Excl. top signs	2800x2000	
Complete	Incl. top signs	2800x2300	

<b>Icon</b>			
Icon 125		883x1183	Two panels
Icon 225		883x2183	Two panels

<b>LaunchPack v2</b>			
Panel, LaunchPack v2* desk		1930x950	Recommendation: Double-sided laminated paper (hot) final thickness 0.6 mm

\*Note: The newer version of LaunchPack has an inner shell lining made of fabric while the previous version of LaunchPack is distinguished by its foam inner shell lining. The dimensions for the previous version of LaunchPack is 193 x 96.5 cm.